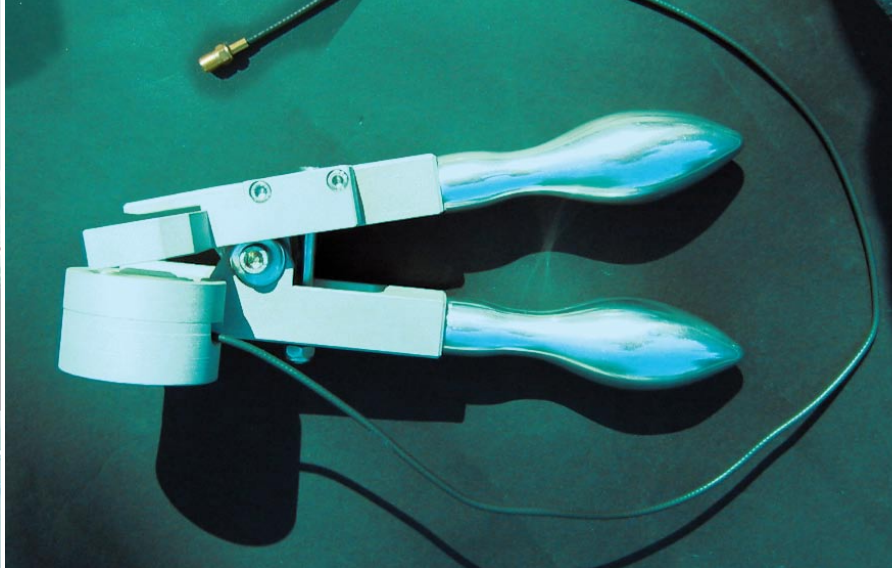


## Click Detector for Quick Connectors

Type: CDQC



### Background

Quick connectors (QC) are commonly used for many connections around the fuel system in cars. In particular there are a few such connections around the fuel tank.

In fuel tank assembly lines the fuel lines are connected to some nipples of the tank by such Quick Connectors. Doing this 8 h/day under time pressure the operator is unable to check whether each QC is assembled correctly. Therefore it happens in some cases that a QC is not really locked.

### Solution

To assist the operator in the assembly procedure MACEAS has developed a QC testing device called **Click Detector (CD)**. The CD detects the typical click sound produced when the QC is mounted correctly.

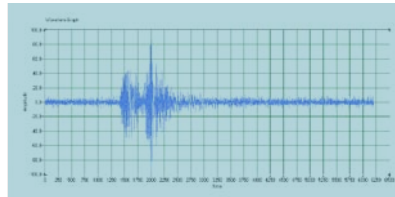


### Your advantage

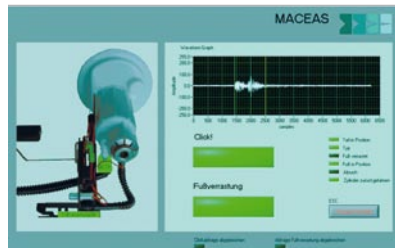
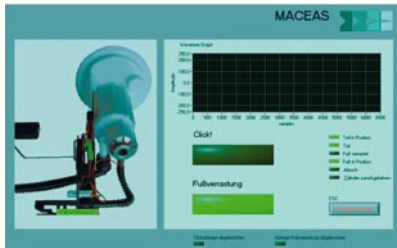
- Monitoring of click sound for correct assembly of Quick Connectors
- No direct contact with the QC
- Documentation of result (OK / NOK) with barcode of component(s)

## Click Detector for Quick Connectors

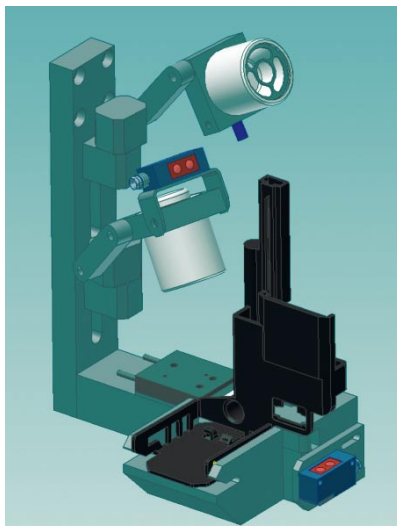
### Click sound in time domain



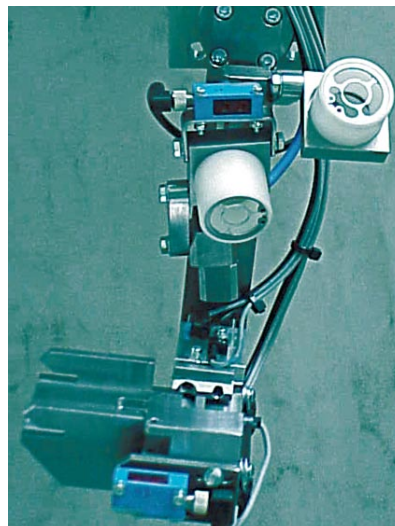
### Visualisation of test results



### Design example



### Example for CD-device



### Appropriate to

Various Quick Connectors if accessible  
by free sound path between QC and  
CD.

MACEAS GmbH  
Königstrasse 2  
26676 Harkebrügge  
Germany

Contact person:  
Dipl.-Physiker Jürgen Steck  
Fon +49 (4497) 92190-17  
Fax +49 (4497) 92190-19  
Mobil +49 (172) 6823421  
steck@maceas.com